

P3 Fixture Adjuster

Converting Martin One-Key from Human Interface Device into Mass Storage Device
for usage with P3-050/100/150/175/200/275/300



Contents

Introduction	3
Verify P3 Fixture Adjuster License	4
Verify current mode of Martin One-Key	6
Convert from HID mode to MSD mode	8
Update firmware of Martin One-Key	9
License Backup	10
Online Backup	10
Local Backup	10

Introduction

After installation of a P3 Fixture Adjuster license onto a Martin One-Key, it can be used to unlock the Fixture Adjuster functionality in the P3 System Controller software. This allows Martin LED Video fixtures with aged LEDs (after years of intensive use) to be brought up to full spec again, and match brand new fixtures in terms of color and brightness.

Martin One-Keys always work with P3-PC, no matter if they are in Mass Storage Device (MSD) or Human Interface Device (HID) mode.

But, to use a Martin One-Key on a P3-050/100/150/175/200/275/300 System Controller, the device needs to be put into Mass Storage Device (MSD) mode.

This document explains how to convert a Martin One-Key from Human Interface Device (HID) mode into Mass Storage Device (MSD) mode.

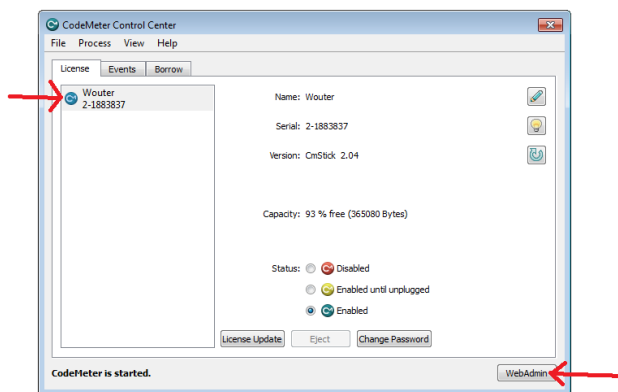
Be aware that the screenshots in this document were made using CodeMeter WebAdmin Version 6.20 and that they may look different if you have another version installed on your computer. The basic steps to follow are however identical.

Verify P3 Fixture Adjuster License

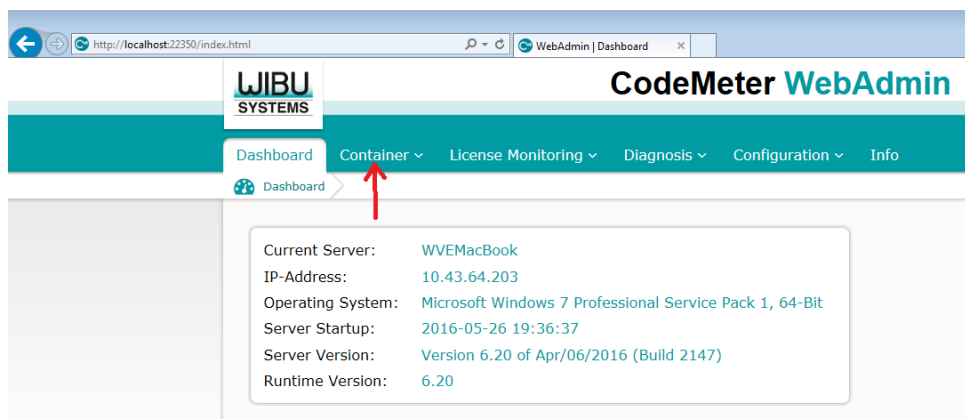
- 1) Open CodeMeter Control Center via this icon (make sure to have CodeMeter Control Center installed (part of P3-PC installation)).



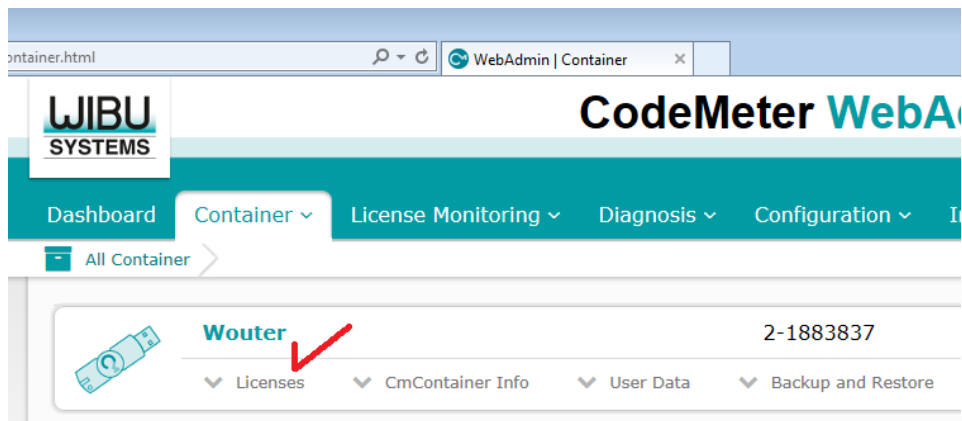
- 2) Make sure your One-Key is selected and click "WebAdmin".



- 3) It will open a webpage. Click "Container".



4) Click "Licenses".



5) If the P3 Fixture Adjuster license shows up in this list, it confirms this One-Key can be used to unlock the Fixture Adjuster on a P3 System Controller. Please note that it is not mandatory to have a P3-PC System Controller license to be able to use the P3 Fixture Adjuster functionality.

The screenshot shows the 'Licenses' tab for the 'Wouter' container (ID: 2-1883837). The interface includes a header with the container name, ID, and version (CmStick 2.04). Below the header, there are four expandable sections: Licenses (selected), CmContainer Info, User Data, and Backup and Restore. The 'Licenses' section is expanded, showing a list of licenses. The list is organized into sections: '100003 Bundling Articles', '100637 Martin Professional A/S', and '100892 Lighthouse Holland bv.'. Each section contains a table with columns: Product Code, Name, Unit Counter, Valid Until, License Quantity, and Feature Map. A red arrow points to the 'P3 Fixture Adjuster' license in the '100637 Martin Professional A/S' section.

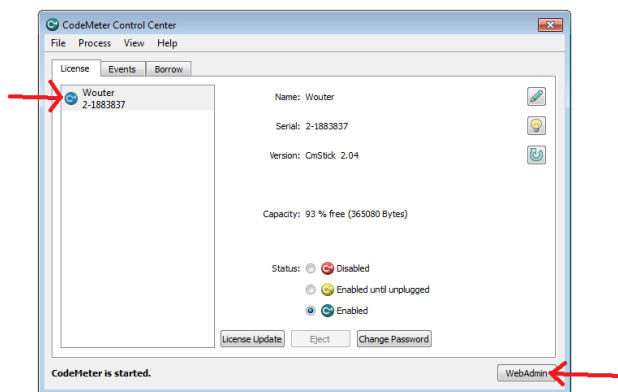
Product Code	Name	Unit Counter	Valid Until	License Quantity	Feature Map
100003 Bundling Articles					
1	SecuriKey Lite	n/a	n/a	1	0x1
100637 Martin Professional A/S					
2048	M-PC Pro	n/a	2012-06-04 15:39:23	16	0x0
39808015	LightJockey	n/a	2012-06-04 15:55:17	1	0x0
39808028	P3-PC System Controller	n/a	n/a	1	n/a
39808042	P3 Fixture Adjuster	n/a	n/a	1	n/a
100892 Lighthouse Holland bv.					
1396985155	Martin ShowDesigner MC	n/a	2012-06-04 15:00:34	1	0x1

Verify current mode of Martin One-Key

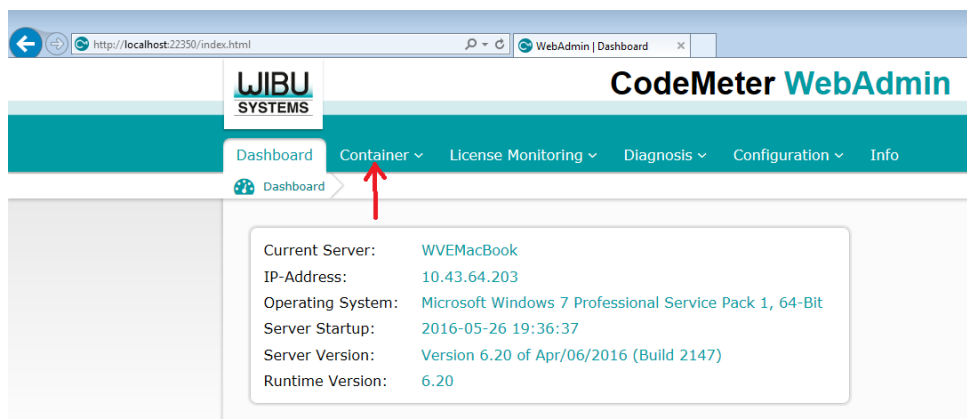
- 1) Open CodeMeter Control Center via this icon (make sure to have CodeMeter Control Center installed (part of P3-PC installation)).



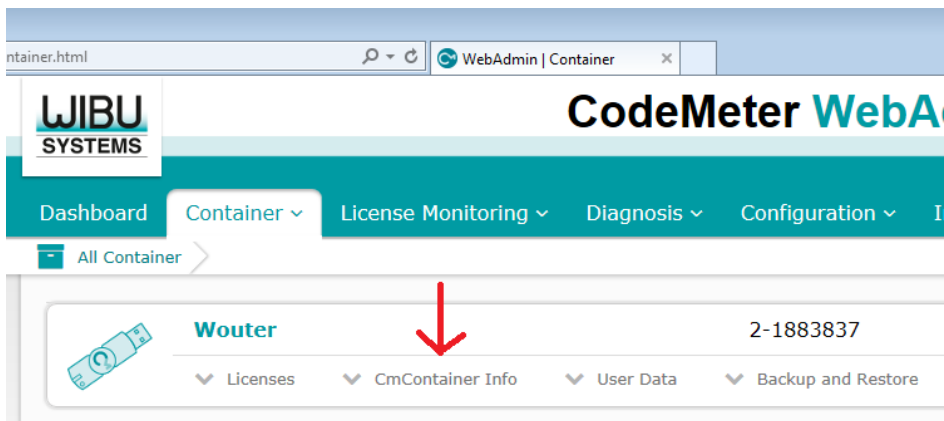
- 2) Make sure your One-Key is selected and click "WebAdmin".



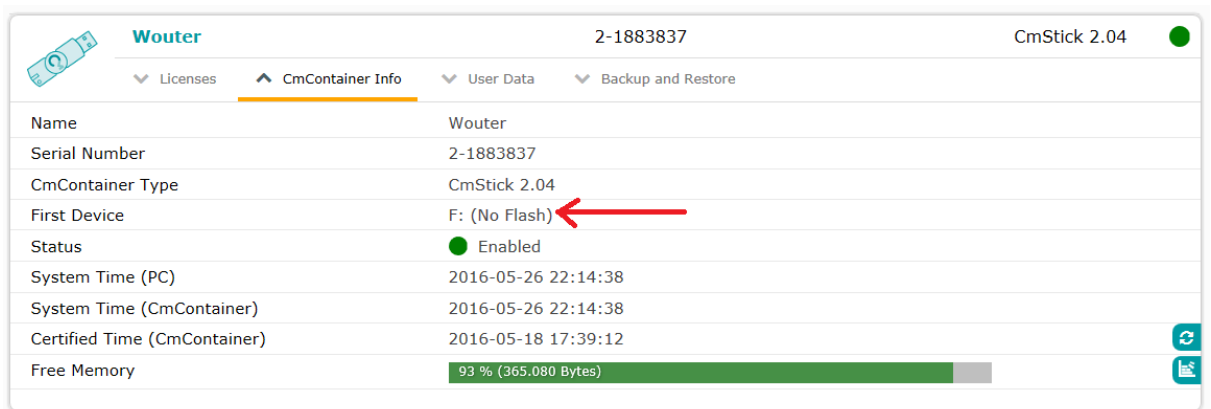
- 3) It will open a webpage. Click "Container".



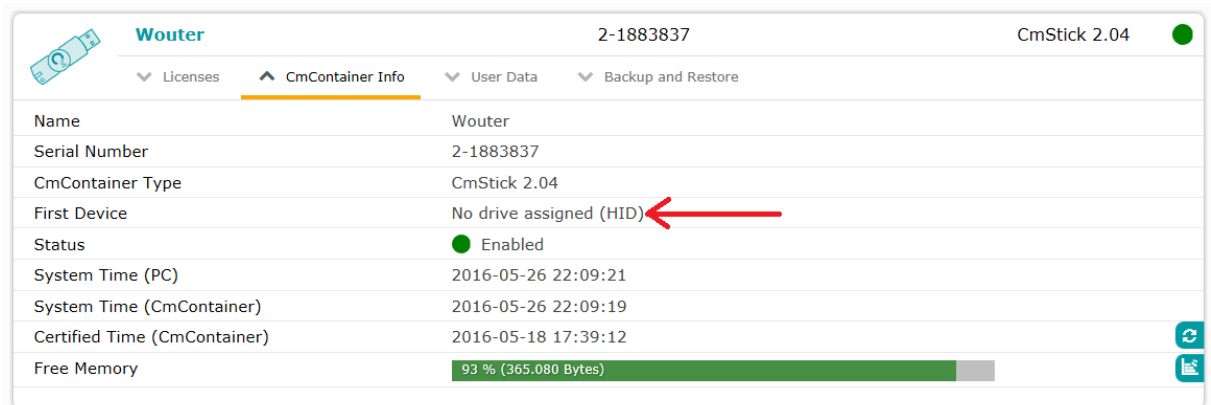
4) Click “CmContainer Info”.



5) If it shows a drive letter, it means the One-Key is configured as MSD (Mass Storage Device) that can be used to unlock the Fixture Adjuster on P3-050/100/150/200/300. **No further action is needed.**

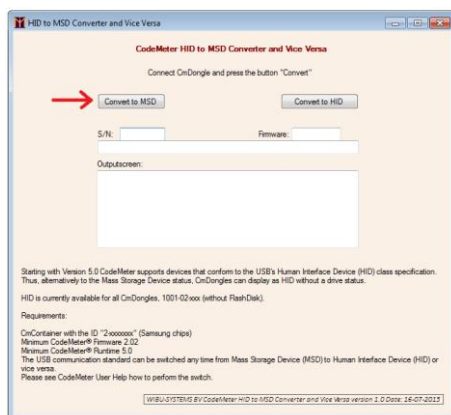


6) If it shows that the One-Key is configured as HID (Human Interface Device), please proceed to the next chapter to convert it to MSD (Mass Storage Device).

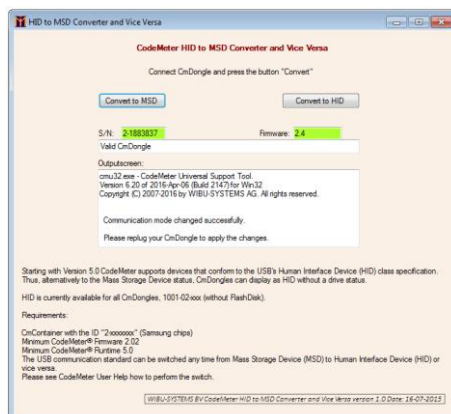


Convert from HID mode to MSD mode

- 1) Make sure you have only one Martin One-Key plugged into your computer.
- 2) Open the “CodeMeter_HID_MSD_Converter.exe” application supplied with this document.
- 3) Click “Convert to MSD”.



- 4) The tool will confirm successful change of the communication mode.



- 5) Unplug the Martin One-Key from your computer, re-plug it back into your computer and follow the steps described in “Verify current mode of Martin One-Key” to confirm that the One-Key is now configured as Mass Storage Device.

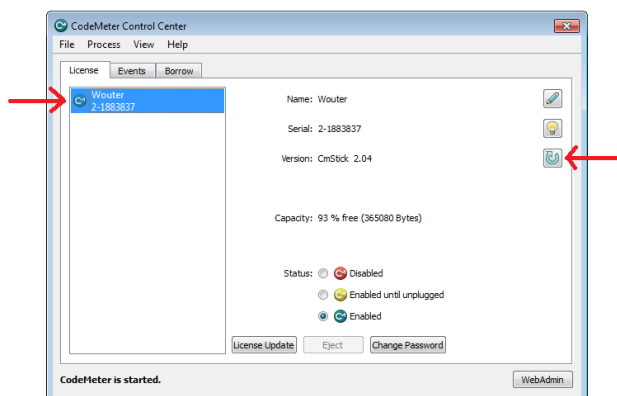
Update firmware of Martin One-Key

In certain cases the tool will ask you to update the firmware of the Martin One-Key to proceed. Please follow steps below in case the tool failed to perform the conversion. **There is no reason to update the firmware of the Martin One-Key if it successfully converted into HID mode!**

- 1) Open CodeMeter Control Center via this icon (make sure to have CodeMeter Control Center installed (part of P3-PC installation)).



- 2) Make sure your One-Key is selected and click the button to update the firmware.



- 3) Re-try the steps described in "Convert from HID mode to MSD mode".

License Backup

An advantage of the One-Key system is the ability to back up the licenses to protect against damage or theft.

Online Backup

This service is not provided by Martin Professional, but by the manufacturer of the license system (Wibu Systems). All requests for support and questions about this feature need to be sent directly to Wibu Systems.

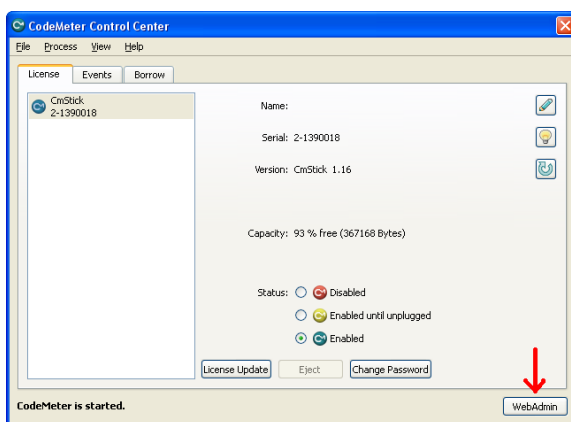
Register your One-Key™ and follow the instructions for backup and archiving of the included licenses on the following website: <https://my.codemeter.com>.

Local Backup

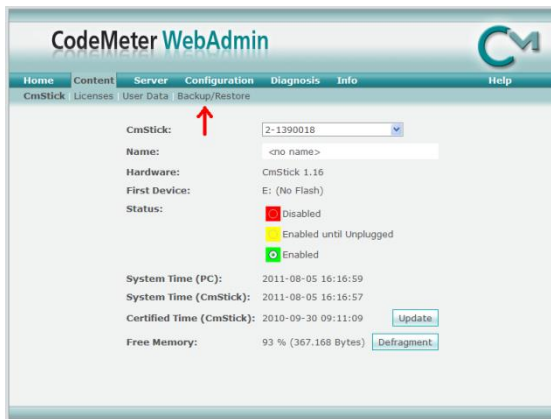
If a Martin One-Key™ dongle is lost, stolen or even defective, it can only be replaced if the user made and kept a backup file of the license(s) on the One-Key™ dongle.

With this backup file we can de-activate the old One-Key™ remotely and re-activate a new one. Please note that a fee is charged for this service.

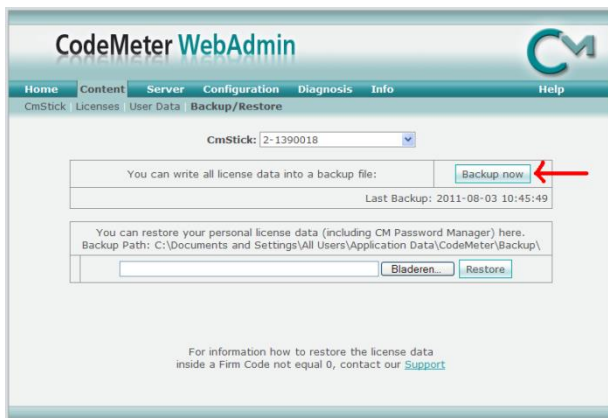
- 1) Start the CodeMeter Control Center via the Start menu or via the system tray. Click the “WebAdmin” button.



2) Click "Backup/Restore".



3) Click "Backup now" to create a backup file.



4) A pop-up window will inform you where the backup file was written. Please store this file safely (and preferably also on another computer).

